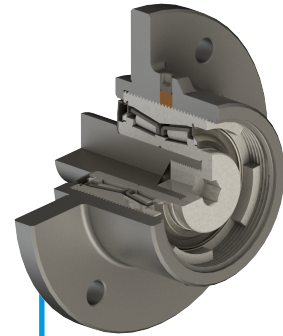


# B&P APPLIED SOLUTIONS

CASE: HUB WITH THREADED FIT



## CONTEXT OF THE PROBLEM

### Place

Argentina. With expansion to Brazil and the United States market.

### Application:

Mainly for seed drills and other agricultural machines.

### Use conditions:

Product that allows regulation point by point, which is affected by high pollution requirements and loads in different directions.

### Terms of use:

Medium to heavy loads

### Customer need:

Eliminate all elements of compensation, and regulate continuously with the same hub and a threaded bearing that it contains.

### Previously used product:

In conventional hubs, when components wear out, washers or pieces of compensation are taken out and placed on the opposite side, just to compensate the wear; this task, for example, in the hubs of the double disc opener of a seeder, must be performed an average of 48 times for each time adjustments must be made.

## B&P RECOMMENDATION

There are many advantages of this product, which can be offered in different dimensions, and for different points of the machines that involve the use of a hub with its respective bearing.

- ▶ Robust design and materials suitable for the application.
- ▶ The fastening of the entire assembly is considerably simplified due to the fact that the bearing already contains a preset that does not depend on the factory setting and/or the user. Therefore, the piece does not lose clearance nor is its useful life affected if it is tightened to the max, for example.
- ▶ Sealed set, maintenance free, and quick assembly.
- ▶ Continuous regulation

## RESULTS

### ▶ For the farmer:

- The adjustment task in each planting row, for example, is widely simplified and shortened in time. And it can be done in a smaller space because it does not require disassembling other parts.
- Better stability per furrow over the entire working width, which allows a high consistency overtime while achieving an optimal of the furrow its firmness, and its subsequent covering. Even at higher working speeds.

### ▶ For the manufacturer:

- Elimination of components, and reduction of the list of materials. Therefore simplifies stock logistics, and reduces process costs.
- Improving their competitiveness by offering a guarantee to your customers, equivalent to the offer in the market. Also with a product with availability, tested in the field for a long time, and easily delivered to the user.
- Reinforcement of your brand image in the market, offering high quality products and with a significant technical.



Fast and easy mounting

**100%**

Maintenance free



Reinforced tightness



High load capacity



Resistance to crashes

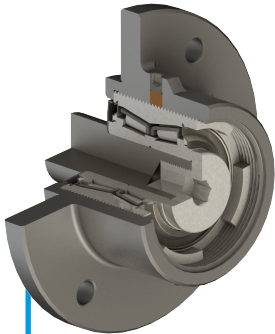
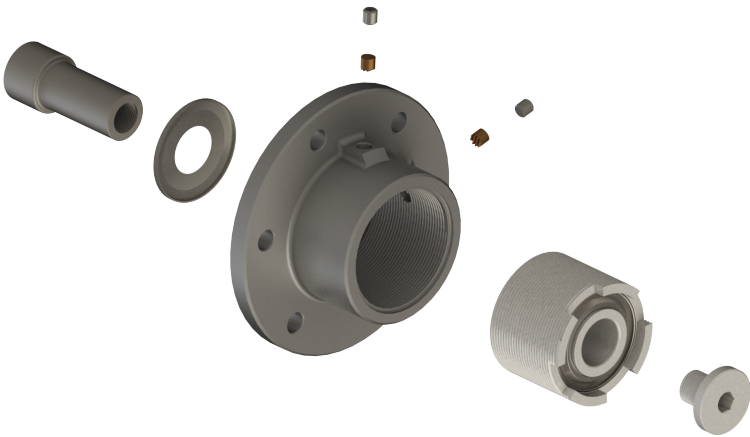


Reduced maintenance intervals  
Less service interruptions

# B&P APPLIED SOLUTIONS

CASE: HUB WITH THREADED FIT

## CONTEXT OF THE PROBLEM



Fast and easy mounting

**100%**

Maintenance free



Reinforced tightness



High load capacity



Resistance to crashes



Reduced intervals maintenance  
Less service interruptions